

**Material Features :**

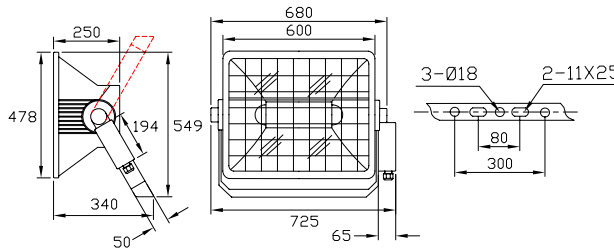
- High-pressure die-casting aluminum case, treated with anti corrosion electrostatic powder painting
- High temperature-proof silicon gasket, Tempered safety glass Plus Stainless Steel guard web.
- High purity aluminum pre-anodized reflector with built-in dark slide.
- Scale Plates in both sides, Convenient to adjust projecting reflector
- Bulbs changeable in the back opening, easy maintenance

**Applicable places :**

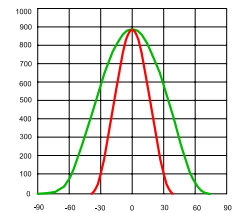
- Illumination of the Stadium(Football, Cricket, Tennis, Volleyball etc) Golf Course, Race Course, Pier, Plaza etc.

IP65 Class I    

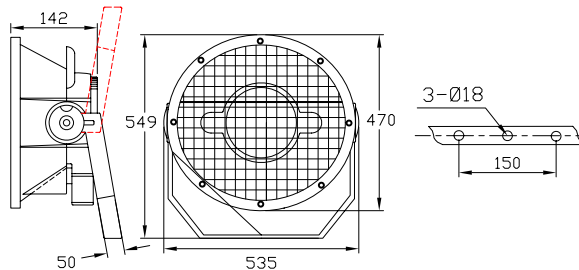
**ELGT24-I, II**



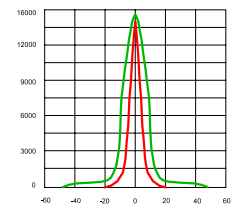
Light Distribution Curve (Cd/1000lm)



**ELGT25**



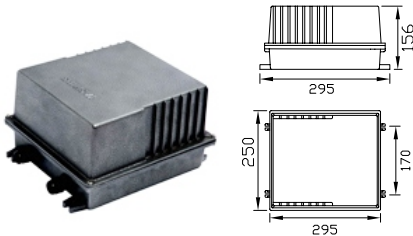
Light Distribution Curve (Cd/1000lm)



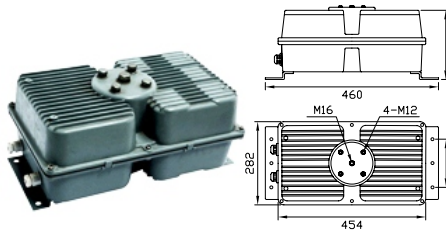
| Model No  | Light Source | Power W   | Power factor pf | Input Voltage V/Hz    | Lamp Type | Lamp Life Hr  |
|-----------|--------------|-----------|-----------------|-----------------------|-----------|---------------|
| ELGT24-I  | HPS/MH       | 1000      | >0.85           | 220~240V/<br>50-60/Hz | E40       | 24000 / 12000 |
| ELGT24-II | MH           | 2000      | >0.85           | 220~240V/<br>50-60/Hz | E40       | 12000         |
| ELGT25    | MH           | 1000~2000 | >0.85           | 380~415V/<br>50-60Hz  | X528      | 12000         |

## Control Gear Boxes

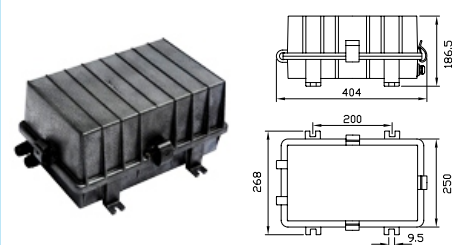
**ELDK7**



**ELDK6 I**



**ELDK6 II**



| Model No | Power        | Material          | Overall Dimension | Fixing Holes |
|----------|--------------|-------------------|-------------------|--------------|
| ELDK7    | 1000         | Die-cast Aluminum | 295X250X156       | 275 X 170    |
| ELDK6 I  | 2000 / 2X400 | Die-cast Aluminum | 460X282X205       | 454 X 160    |
| ELDK6 II | 2000 / 2X400 | Die-cast Aluminum | 404X268X186.5     | 200 X 250    |